



INTRODUCTION

Thoughtful planning has made Morgan Hill one of the most desirable communities in Santa Clara County. People are drawn to the beautiful hillsides surrounding the valley, the peaceful atmosphere and the superior quality of life Morgan Hill offers. Morgan Hill's combination of climate, resources, points of interests, activities and diversity provide a solid economic environment as well as a vital and exciting community in which to live, work and play.

Morgan Hill offers a professional, safe, relaxed, clean and family-oriented image. It provides an excellent quality of life with many services that meet the personal needs of all residents. Morgan Hill is a community that cares about its citizens and strives to provide the best for all.

Near the heart of downtown Morgan Hill, Huntington Square is dedicated to providing homebuyers with genuine craftsmanship that appeals to a wide-range of life styles. Consisting of 134 luxury town homes, Huntington Square offers you and your family an exceptional place to call home. So, if you are looking for a great community to live in, come visit Huntington Square and see why it is such a great place to build your dreams.



PLAN 1

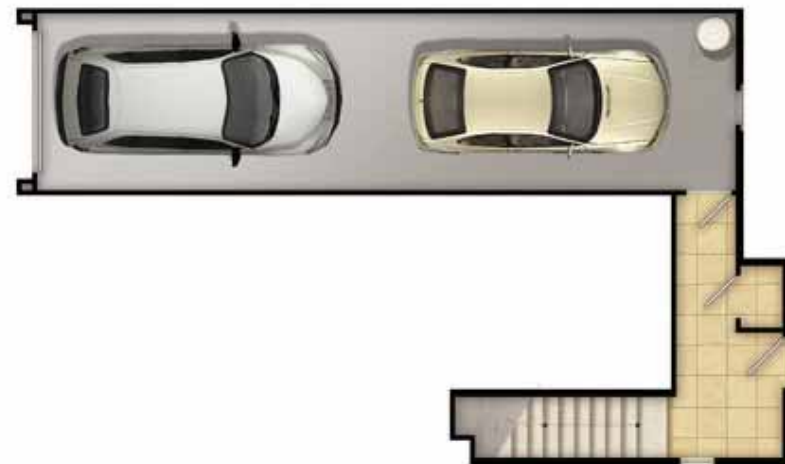
Approximately 1,243 sq. ft., 2 bedrooms / 2.5 baths
Attached Two-Car Tandem Garage



THIRD FLOOR



SECOND FLOOR



FIRST FLOOR

Unit square footage and floor plan will vary based on unit location and building elevation.
Huntington Square, LLC reserves the right to make changes to floor plans, prices, finishes and specifications at their discretion.

PLAN 2

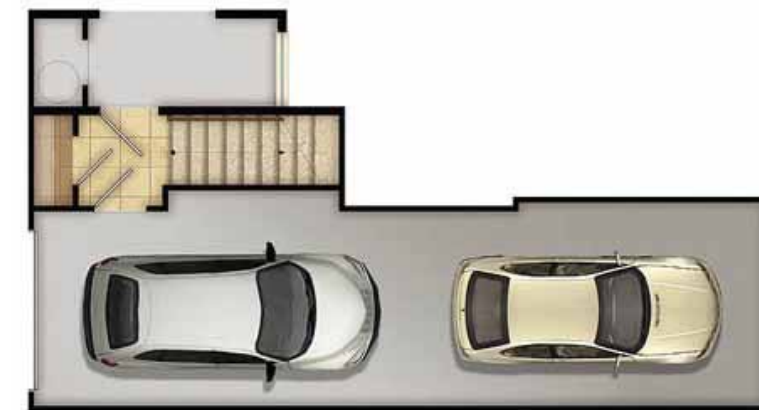
Approximately 1,288 sq. ft., 2 bedrooms / 2.5 baths
Attached Two-Car Tandem Garage



THIRD FLOOR



SECOND FLOOR



FIRST FLOOR

Unit square footage and floor plan will vary based on unit location and building elevation.
Huntington Square, LLC reserves the right to make changes to floor plans, prices, finishes and specifications at their discretion.

PLAN 3

Approximately 1,346 sq. ft., 3 bedrooms / 3 baths
Attached Two-Car Tandem Garage



THIRD FLOOR



SECOND FLOOR



FIRST FLOOR

Unit square footage and floor plan will vary based on unit location and building elevation.
Huntington Square, LLC reserves the right to make changes to floor plans, prices, finishes and specifications at their discretion.

PLAN 4

Approximately 1,673 sq. ft., 3 bedrooms / 3.5 baths
Attached Two-Car Garage



THIRD FLOOR



SECOND FLOOR



FIRST FLOOR

Unit square footage and floor plan will vary based on unit location and building elevation.
Huntington Square, LLC reserves the right to make changes to floor plans, prices, finishes and specifications at their discretion.

FEATURES

At Huntington Square, we believe a great home begins with timeless design and custom standard features. We've Embellished the homes with tasteful details that will provide years of enjoyment — and a feeling of pride every time you come home.

FEATURES

- All homes feature distinctive Craftsman style architecture
- Handsome low maintenance, fire-resistant composition shingle roof for lasting beauty and protection
- Beautiful and durable 3-coat stucco exteriors and Hardy Board with ornamental masonry detailing, per residence
- Eight-foot, raised, six-panel fiberglass entry door with polished chrome handle set for elegant first impression
- Two-car garage features steel roll-up door and automatic garage door opener with two remotes
- Beautifully landscaped front yards and common area Clubhouse and Pool for a welcoming feel every time you come home
- Inviting front porch, per residence

GOURMET KITCHENS

The kitchen is the “heart of the home,” a place for the family to gather and share the events of the day.

- Custom cabinetry with designer finishes, white interior lining, adjustable upper shelves, concealed hinges, and easy-glide drawers
- Designer-selected, hand-set, granite slab countertops
- Stainless steel dual compartment kitchen sink with gourmet pull-out faucet
- Beautiful white, black, or stainless steel appliances including:
 - Five-burner gas cooktop
 - Self-cleaning electric oven
 - Deluxe multi-cycle dishwasher
 - ½ h.p. garbage disposal
- Designer-selected, 12” x 12” ceramic tile flooring
- Recessed lighting with dimmer switch in dining room lets you determine the mood
- Under-cabinet task lighting puts light where you need it
- Refrigerator space plumbed for ice maker for easy installation

Huntington Square, LLC reserves the right to change or modify floor plans, finishes, materials or specifications.
Huntington Square, LLC reserves the right to change prices, terms and specifications without prior notice.
Floor plan and square footages are architectural estimates and will vary based on unit location and building elevation.

INSPIRING INTERIORS

High ceilings make interior spaces inviting. Rooms are arranged to keep the family close — while providing plenty of privacy

- Five exciting and functional floor plans that include open living spaces
- Hand-set 12” x 12” ceramic tile flooring in entry.
- Designer-selected stain-resistant carpet for impressive style and durability
- Classically-designed stairs with stained handrail, and painted newels
- Lightly-textured wall finish with designer-selected, two-tone paint for richness and character
- Convenient recessed lighting in select locations for abundant light
- Pre-wire for ceiling fan in family and all bedrooms
- Raised panel interior doors with polished door knobs

FEATURES

PRIVATE MASTER SUITES

Welcome to your private domain. The master suites in Huntington Square surround you with comfort – a welcome retreat from your busy day. Stylish bath fixtures add a distinctive touch of class.

- Designer-selected, hand-set, tile flooring
- Designer-selected, hand-set, tile vanity countertop with bull nose edge and backsplash
- Shower with clear glass frameless door with polished trim
- Beveled mirror with decorative light bar over sinks
- Walk-in closet with thoughtfully designed shelving helps make organizing and storing easy, per residence

SECONDARY BATHS

Natural beauty and long-lasting durability can be found in the home's secondary baths.

- Tub with shower over head
- Hand-set ceramic tile vanity top
- Designer-selected light fixtures
- Designer-selected, 12” x 12” ceramic tile flooring
- Designer beveled edge mirrors

...and, much more. Contact the Huntington Square sales team for details of which optional features are available.

Huntington Square, LLC reserves the right to change or modify floor plans, finishes, materials or specifications.
Huntington Square, LLC reserves the right to change prices, terms and specifications without prior notice.
Floor plan and square footages are architectural estimates and will vary based on unit location and building elevation.

ADDITIONAL FEATURES

Each home is filled with the extra features you expect in a quality home.

- Structured wiring throughout the home for high-speed networking, including dual Category 5 cable with phone in kitchen and master bedroom and universal outlets in family room, den and all bedrooms, per residence
- Gas and electric dryer hook-ups
- Security system
- Cozy Fireplace located in the Family room.

ENERGY SAVING AND SAFEGUARD FEATURES

Thoughtfully crafted to meet today's efficiency and safety needs.

- Homes meet ENERGY STAR program guidelines increasing energy efficiency of the home
- Dual-pane vinyl windows with low-E glass for improved energy saving
- Forced air zone gas furnaces with electronic ignition and energy-efficient electronic set-back thermostat
- Air conditioning
- Energy saving gas water heater with recirculation pump to all fixtures
- Fire sprinklers located throughout home and garage for peace of mind
- Smoke detectors wired throughout the home for safety

SITE PLAN

